



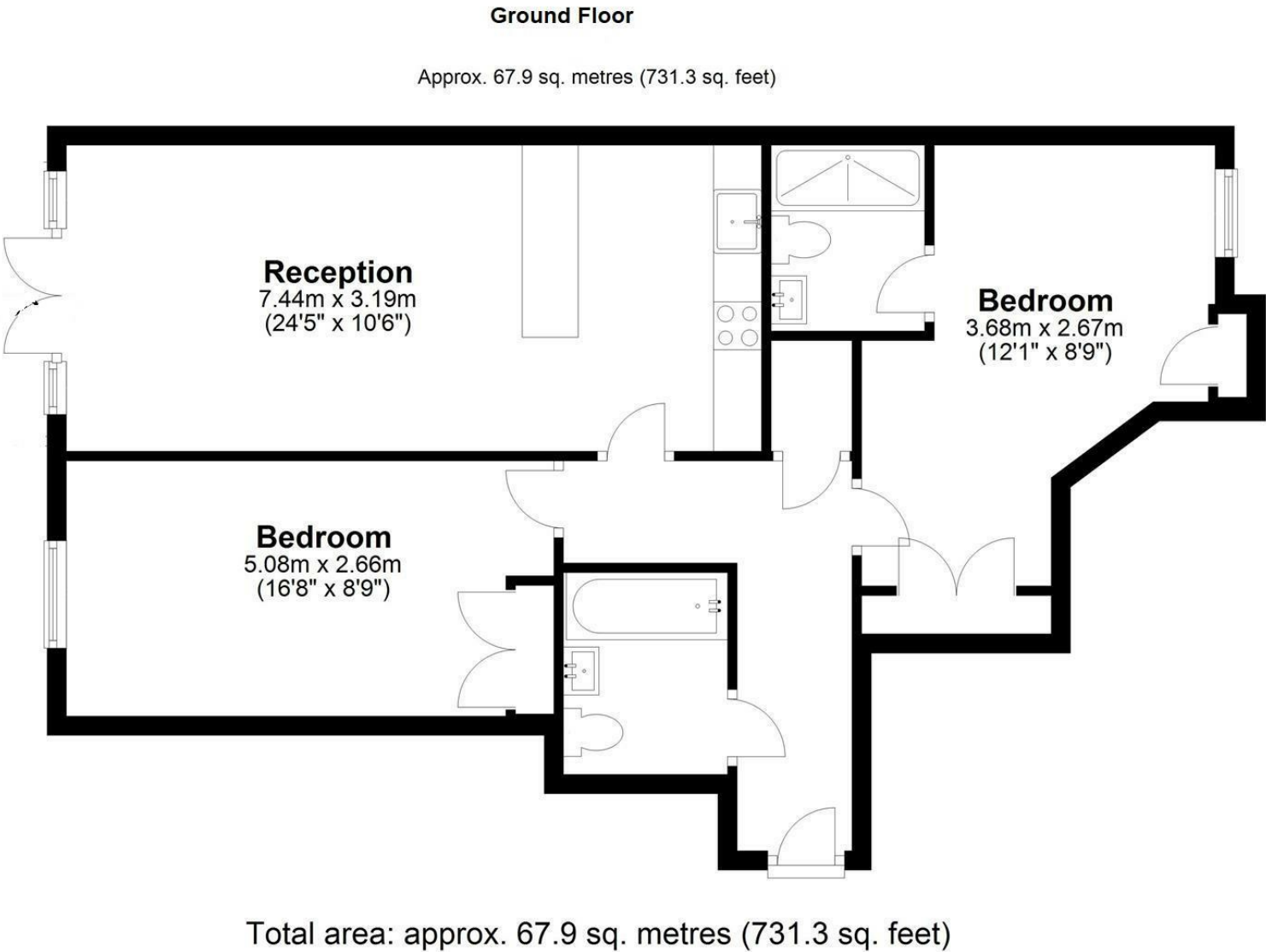
Lexington House, 35 Park Lodge Avenue, West Drayton,

- Parkwest
- Residents Gym
- Furnished
- EPC Rating- C
- Ground Floor
- Concierge
- Communal grounds
- Available for March

£1,650 PCM

Description

A two bedroom ground floor apartment located in the popular Parkwest Development that benefits from a 24 hour concierge service and residents gym. Two double bedrooms with an en-suite shower room to the main bedroom, open plan kitchen with built in appliances. Parkwest is positioned in a great location with access to the train station, bus routes and local amenities. Available for March and presented furnished.



IMPORTANT NOTICE

These particulars have been prepared upon information supplied by the Vendor and should be verified by your surveyors and solicitors. We have prepared these sales particulars as a general guide to give a broad description of the property. They are not intended to constitute part of an offer or contract. We have not carried out a structural survey and the services, appliances and specific fittings have not been tested. All photographs, measurements, floor plans and distances referred to are given as a guide only and should not be relied upon for the purchase of carpets or any other fixtures or fittings. Lease details service charge and ground rent (where applicable) are given as a guide only and should be checked and confirmed by your solicitor prior to exchange of contracts